

Next level kitchening



CUISINNO

THE **KITCHEN APPLIANCE** AMONGST MONITORS

PROFESSIONALS USE **KITCHEN MONITORS**

It is no surprise that the use of dedicated kitchen-display systems in high-end gastronomy is on the rise - the benefits are evident:

✓ Improved communication flow

Kitchens are busy places – and it can get loud from time to time. Hence it is not always easy to keep a clear head in every situation.

A kitchen display greatly facilitates the communication between guest, waiter and the kitchen team. Data is exchanged with the POS system in real time, without delays or misunderstandings due to noise. Consequently, workflows become much more efficient.

✓ Increased efficiency due to smoothed workflows

No lost receipts, a reduction in ‘idling’ – Cuisinno greatly increases the effectivity of the whole team.

Thanks to the visual depiction of an order, the entire team is immediately able to understand their respective tasks and can begin with the preparation before the waiter has even returned to the kitchen.

✓ A professional appliance for professional kitchens

A professional kitchen in full operation is very different to a private living room. A dedicated kitchen monitor therefore must meet very specific requirements that conventional (home-) devices do not provide.



THE **BENEFITS OF CUISINNO**



Cuisinno has been designed specifically to facilitate and smoothen the demanding workflows of the entire team in a professional kitchen. That is why Cuisinno is cherished by chefs and staff alike:

✓ Fail-safe & robust

The Cuisinno Monitor is designed for 24/7 continuous operation. All parts in the robust, hard-anodized aluminum housing are industrial components, with unmatched quality and reliability compared to consumer products.

✓ 100% hygienic

Hygiene is of highest priority in kitchens! Cuisinno has no air vents through which water, filth or grease could enter.

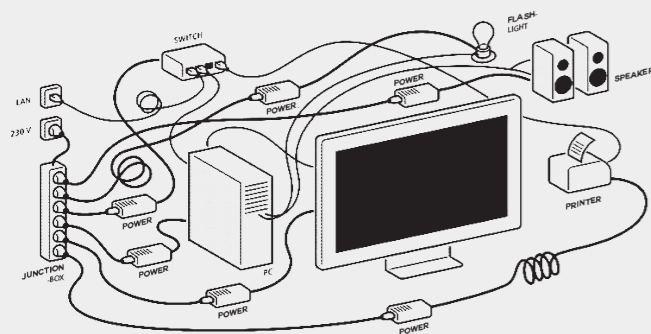
✓ Cleaning is fast and easy

Smooth surfaces, no joints, no seams and no sharp edges or corners.

✓ Temperature resistant

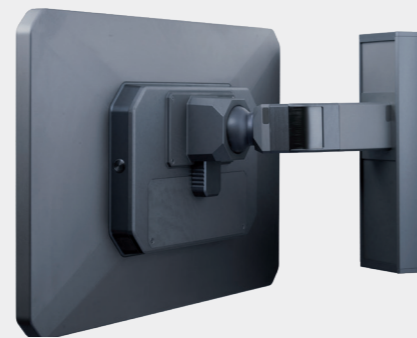
Designed for a temperature range from 0 to +50 °C.

CUISINNO IN COMPARISON



CONVENTIONAL SYSTEMS

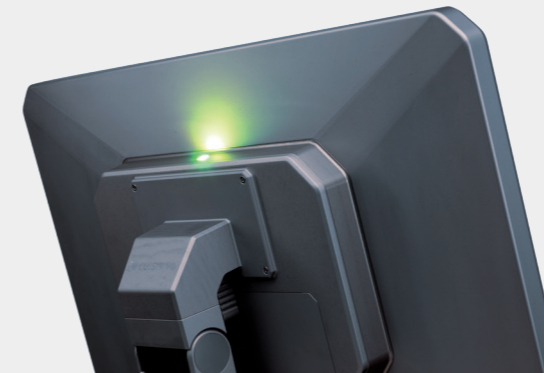
Conventional kitchen-display systems are generally just converted consumer products, the wiring is complex, complicated and prone to errors.



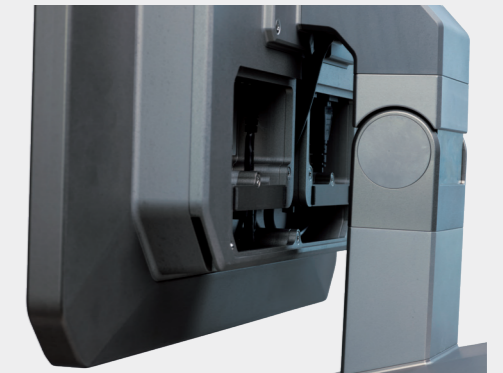
THE CUISINNO SOLUTION

CUISINNO shelters all necessary system components in a closed, hard anodized aluminium housing. Robust, compact and virtually impervious.

SOPHISTICATED DETAILS



Smart notification function:
A flashing LED indicates an incoming new order. No more overlooked tickets!



Smart wiring:
All wires remain neatly and securely tucked away thanks to the internal cable routing.

SPECIFICATIONS & ACCESSORIES



Casing

Robust, hard anodized aluminium housing

Measurements:
21.5" = 568 x 360 x 70 mm
32" = 796 x 490 x 83 mm

Weight:
21.5" = 11.65 kg
32" = 19.75 kg

**No openings for ventilation;
service-friendly access to all interfaces**

Display

TFT Full HD active matrix (1.920 x 1.080 Pixels)

21.5" Brightness: 250 cd/m²
32.0" Brightness: 400 cd/m²

Controls

Capacitive multi-touch technology
The screen can be operated with wet hands
as well as (up to medium thick) gloves

Capacitive function buttons

Power switch

CPU

Intel® Atom E3845 quad core 1.91 GHz



Graphics controller Intel® HD Graphics

Memory 2x4 GB DDR3L-SODIMM-1600

Hard Drive 32 GB mSATA

Interfaces 2 x USB 2.0
2 x USB 2.0 below the casing (easily accessible for servicing)
DP (DisplayPort)
Integrated switch: 4 Port Gbit

Operating System Windows (Embedded POSReady 7; Windows 10 IoT)

Special Features Integrated flash signaling the receipt of a new ticket
"Screen off" when the lights are out in the kitchen
"Touch lock" when cleaning the device
Two stereo speakers with 3-Watt output each

Power supply Integrated 100 – 240 VAC power supply
Cold appliance socket for looping on to a printer

Mounting The Cuisinno mounts and stands were designed for kitchen environments and are easy to clean due to smart internal wire routing.

- 1 Cuisinno wall mount with ball joint
- 2 Cuisinno table stand

VESA adapter plate: 100 x 100 mm
100 x 200 mm



1



2